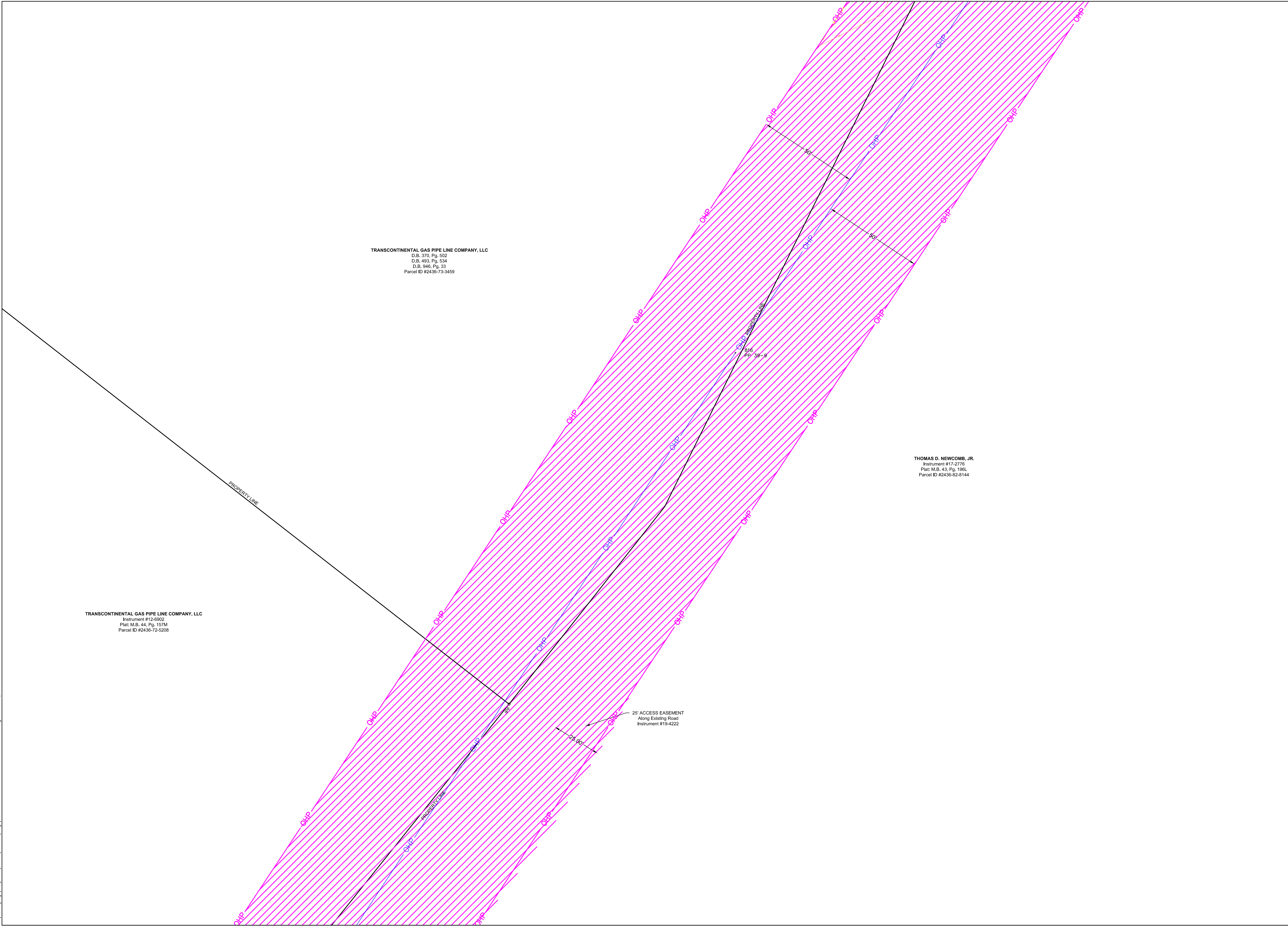


T:\Surveying\Projects\2023\50223\MECKLENBURG ELECTRIC EASEMENTS.dwg - Jun 25, 2024 - B: 4:55m

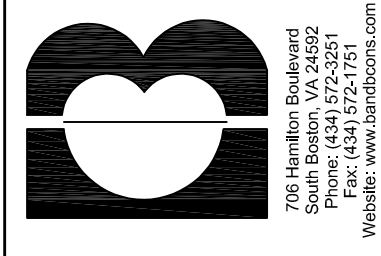


TRANSCONTINENTAL GAS PIPE LINE COMPANY, LLC  
 Instrument #12-6902  
 Plat: M.B. 44, Pg. 157M  
 Parcel ID #2436-72-8208

TRANSCONTINENTAL GAS PIPE LINE COMPANY, LLC  
 D.B. 370, Pg. 502  
 D.B. 493, Pg. 534  
 D.B. 940, Pg. 33  
 Parcel ID #2436-73-3459

THOMAS D. NEWCOMB, JR.  
 Instrument #17-2776  
 Plat: M.B. 43, Pg. 198L  
 Parcel ID #2436-82-8144

25' ACCESS EASEMENT  
 Along Existing Road  
 Instrument #19-4222



CERTIFICATION

NO.	DATE	REVISIONS

PROPOSED EASEMENTS

TRANSCO TOPO PITTSYLVANIA COUNTY, VA.  
 FOR MECKLENBURG ELECTRIC COOPERATIVE

**B & B Consultants, Inc.**  
Engineers - Surveyors - Planners - Land Architects  
Charles City, South Hill, & South Boston, Virginia

COMMISSION NO.  
 DESIGNED BY  
 DRAWN BY  
 CHECKED BY  
 ISSUE DATE  
 1/25/2024

SHEET NO.  
 2