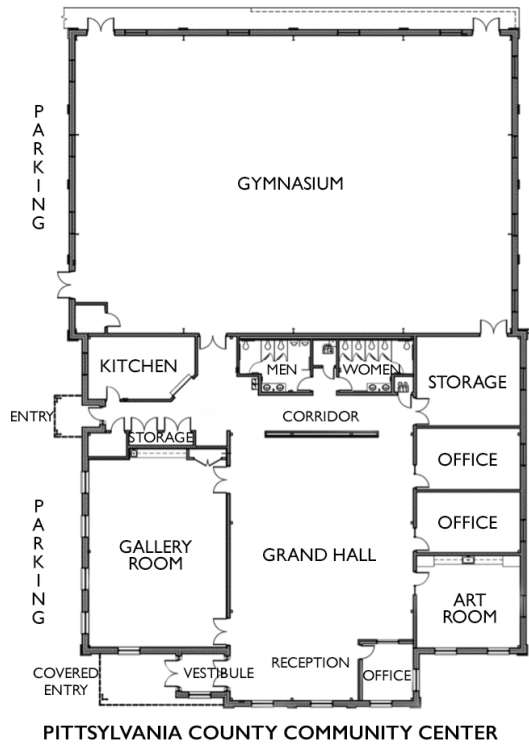


Floor Map



About Us

The Pittsylvania County Community Center serves as the home for the Pittsylvania County Parks and Recreation Department. This 14,000-square-foot facility offers several rentable rooms for events like parties, bridal and baby showers, receptions and basketball or volleyball practices. The building also offers wireless internet throughout as well as a commercial kitchen. The building is handicap accessible and includes computer-controlled utilities for state-of-the-art energy efficiency. Security cameras throughout the building ensure the safety of Center patrons and their guests. Tables and chairs are included for all events.

For pricing & information, visit:
pittsylvaniacountyva.gov/recreation

📍 115 S. Main Street, Chatham, VA 24531
☎️ (434) 432-7736 ✉️ recreation@pittgov.org

PITTSYLVANIA
COUNTY, VIRGINIA
PARKS AND RECREATION



Pittsylvania County Community Center

The Ideal Place to Host your Next Big Event!

Driving Directions

From Danville:

- Start out going north on US-29 Bus N toward Lynchburg - 8.53 miles
- Merge onto US-29 N toward Chatham/Lynchburg - 7.87 miles
- Take US-29 Bus N/S Main St toward Chatham - 1.51 miles
- The destination will be on your right - Community Center (115 S MAIN ST).

From Gretna:

- Start out heading south on US-29 BUS S/Main St. - 7.9 miles
- Take the exit toward VA-57 towards Chatham/South Boston - 0.2 miles
- Turn right onto VA-57 W - 1.0 mile
- The destination will be on your right - Community Center (115 S MAIN ST).

@pittgovrec  

Check out our rental spaces for any event...

- Weddings, showers & parties
- Dinners, banquets & fundraisers
- Meetings, seminars & expositions
- Basketball, volleyball, sports practices
- Anniversaries, receptions & family reunions
- 14,000-square-foot facility
- Set up & clean up provided with every rental
- Chairs & tables included for all events
- Commercial kitchen available
- WiFi connection

Grand Hall



The Grand Hall has 2,520 square feet of space. It can seat approximately 175 people theater style and just under 100 people at tables.

Art Room



The Art Room offers the ideal setting for creativity, including built-in storage for art materials, tiled floor for messy projects and numerous art tables.

Gallery Room



The Gallery Room is just over 1,400 square feet. It includes seating for 60 people, room darkening shades for presentations, and cabinetry and a sink for small-scale beverage service for meetings. It is fully equipped to meet various multi-media needs, including a 9-foot retractable overhead screen. This room is our most rented room and is great for parties, receptions, showers, meetings and more.

Gymnasium



The Gymnasium is a full-sized basketball court, which includes a rubberized floor, bleacher seating for 100 people, electric retractable regulation height goals, padded walls and an indoor volleyball system built into the floor. The gym also seats 450 people theater style and 320 people at 40 tables of eight.

Kitchen



Food Services are available through outside catering or our full-service kitchen, which includes commercial fixtures and appliances.