

Sheet Index

General

T1 Title Sheet

Civil

- C1 Survey and Legal Description
- C2 Site Plan
- C3 Sabre Tower 54367B
- C4 Stamped Tower Foundation
- C5 Stamped Shelter Foundation
- C6 Misc. Construction

Electrical

- E1 Electrical Service / Meter Center
- E2 Grounding Plan
- E3 Grounding Details

Project Description

Erect new 195' Self Supporting Tower, Set Prefabricated Shelter and Lot Improvements.

Directions to Site

Turn South on County Road 668 off of Highway 29 business. Travel 4 miles and site will be on the left.

Site Information

Jurisdiction: Pittsylvania County
 GPIN: 2564-49-4723
 Occupancy: None
 Zoning: M-1
 Construction Type: Self Supporting Lattice
 Total Area: 25,000 Sq. Ft. Partitioned from Main Lot



Pittsylvania County Emergency Management

Wireless Communications Site

Grit Road Site

195' Self-Supporting Lattice Tower

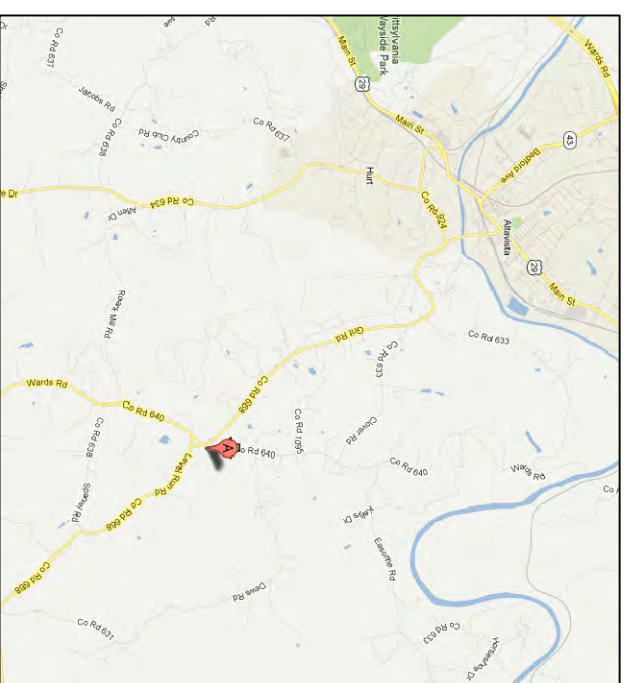
3710 Ward Road

Hurt, VA 24563

Latitude: N 37° 04' 11.07" NAD83

Longitude: W 79° 14' 55.48" NAD83

Site Elevation: 819'



Vicinity Map



Site Map

Utilities

Miss Utility

Contractor to call 48 hours before digging!
 Phone (888) 569-5700.
 Independent locators to be used on all sites

Contacts

Owner

Pittsylvania County Board of Supervisors
 53 North Main Street
 P.O. Box 426, Chatham, VA 24531
 Dan Sleeper, Administrator
 Phone (434) 432-7710

Applicant

Pittsylvania County Board of Supervisors
 53 North Main Street
 P.O. Box 426, Chatham, VA 24531
 James Davis, Director Emergency Management
 Phone (434) 432-7710

Title:

Title Sheet

Sheet # 1 of 10

Seal

No.	Revision/Issue	Date



Project: Pittsylvania County Grit Road Tower	Sheet:
Date: 05/19/2012	T1
Scale: NTS	

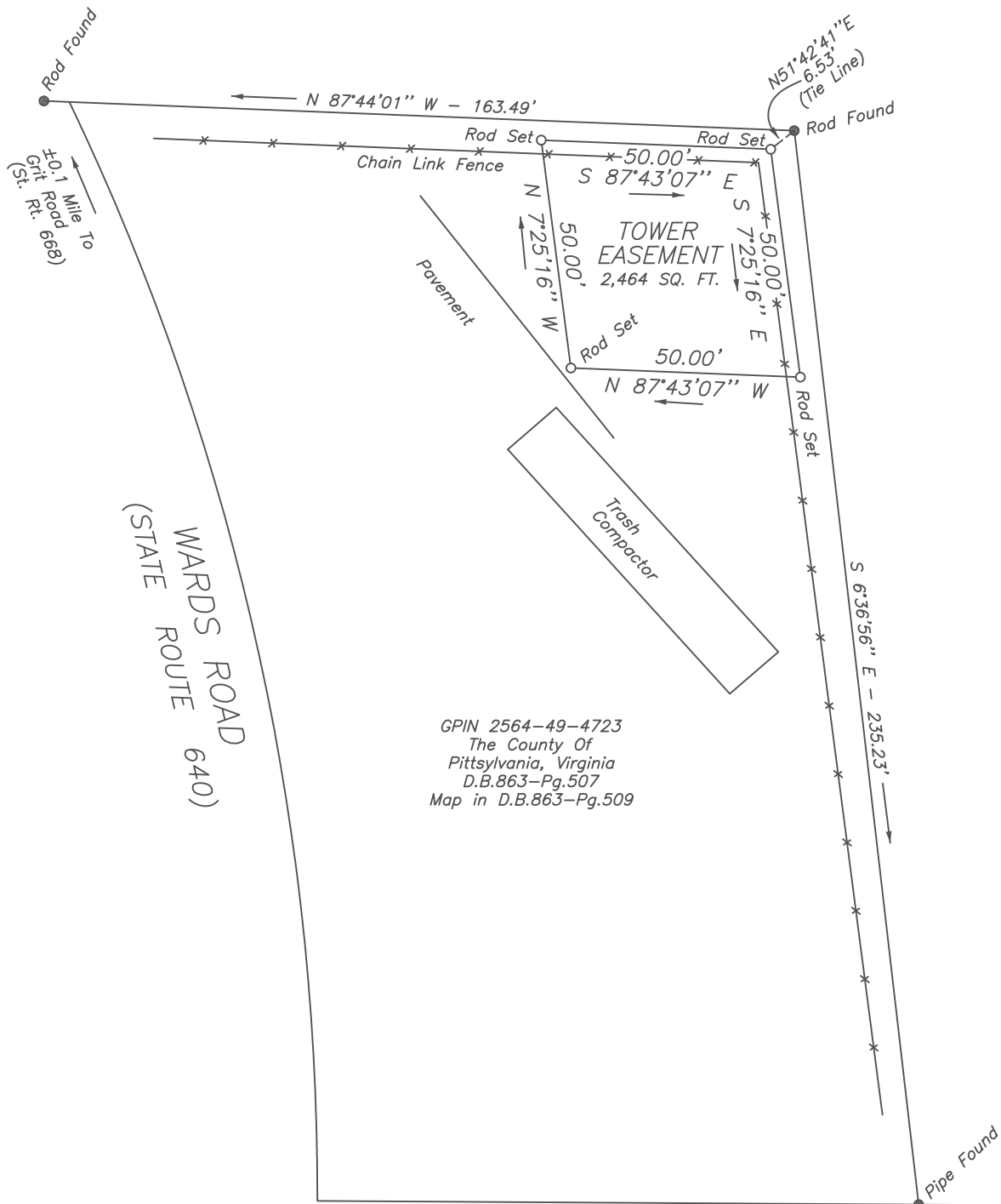
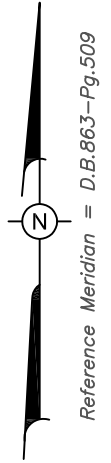
NOTES:

This plat represents a current field survey by Piedmont Surveying And Design, P.C.

This survey has been prepared without the benefit of a title report and does not necessarily indicate all encumbrances on the property.

All deed and map references shown hereon are of record in the Pittsylvania County Circuit Court Clerk's Office.

GPIN 2565-40-9456
Estate Of Doris S. Arthur
D.B.373-Pg.459
WF11/01014



EASEMENT PLAT
FOR

PITTSYLVANIA COUNTY

GPIN 2564-49-4583
Peoples Mutual Telephone Co.
D.B.1073-Pg.195

Showing Easement Situated Off The East Side Of Wards Road,
Staunton River District, Pittsylvania County, Virginia.

Current Property Owner:
The County Of Pittsylvania, Virginia
Legal Reference: D.B. 863 - Pg. 507
Map Reference: D.B. 863 - Pg. 509
GPIN 2564-49-4723



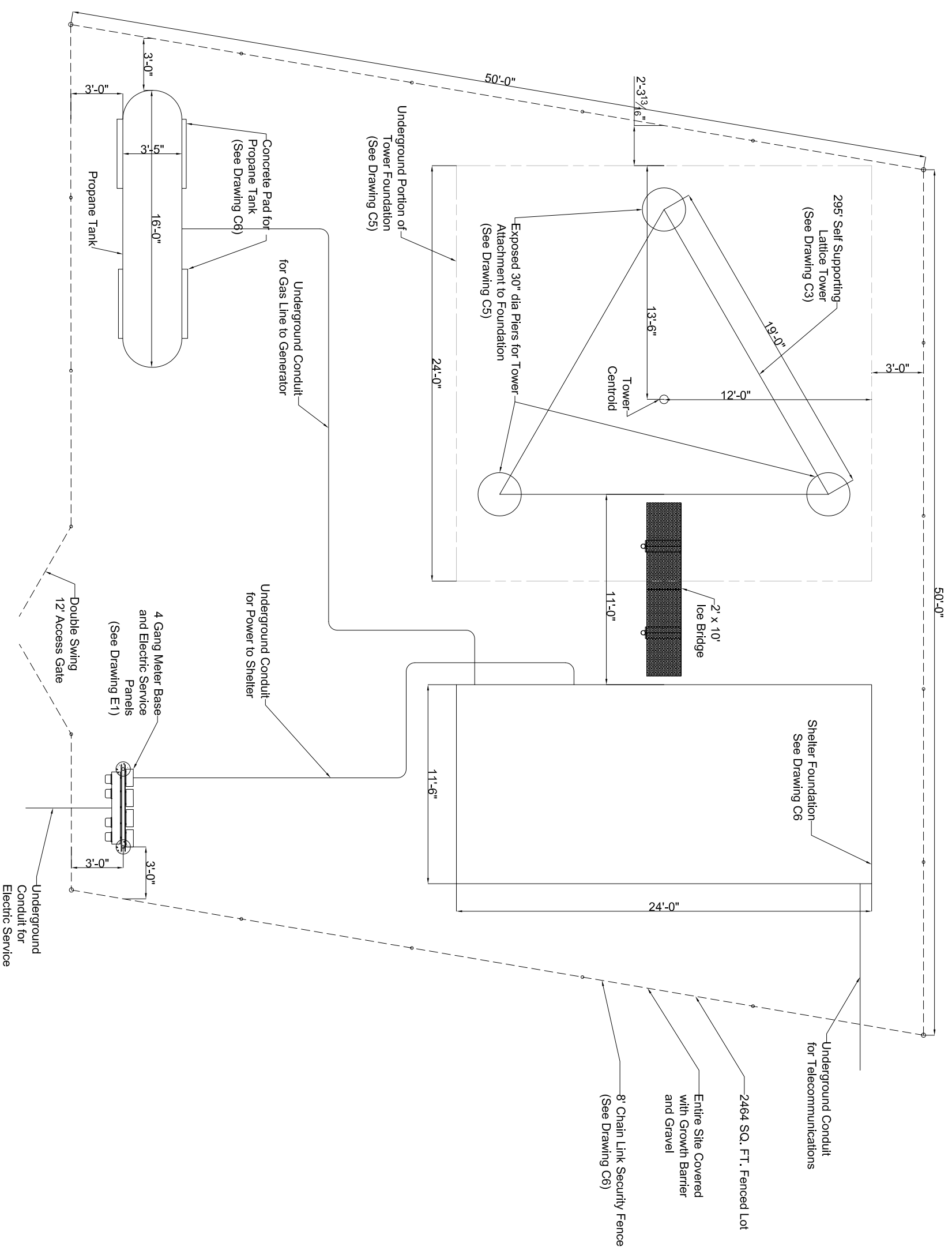
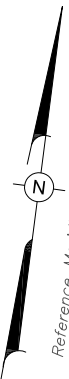
Scale : 1" = 30'
June 5, 2012



PIEDMONT SURVEYING AND DESIGN, P.C.
3416 VIRGINIA AVENUE, SUITE 5, COLLINSVILLE, VIRGINIA 24078
276-647-4448

JOB NO.: 12-045

		<p>Pittsylvania County Emergency Management 53 North Main Street P.O. Box 12631 Charlottesville, VA 22901 Phone: 434-932-7710</p>	<p>No. _____</p> <p>Revision/Issue _____</p> <p>Date _____</p>	<p>Seal</p>	<p>Survey and Legal Description</p> <p>Sheet # 2 of 10</p>
<p>Project: Pittsylvania County Gt. Road Tower</p>	<p>Date: 05/19/2012</p> <p>Scale: NTS</p>				



Title:	Site Plan
Sheet #	3 of 10

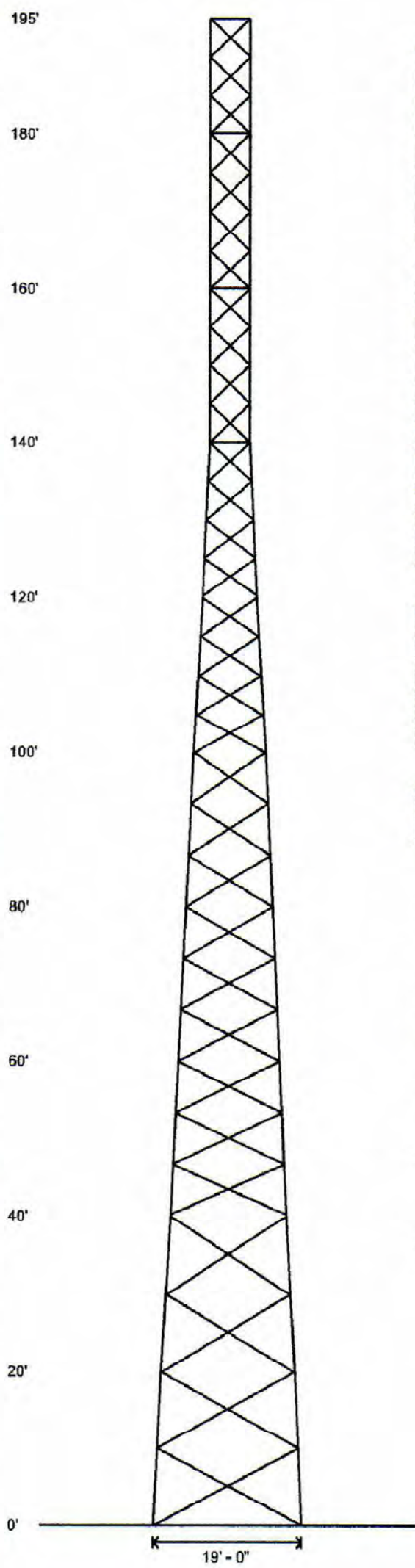
Seal

No.	Revision/Issue	Date

Pittsylvania County
Emergency Management
53 North Main Street
PO Box 428
Chatham, VA 24531
Phone: 434-432-7170

Project:	Pittsylvania County Gift Road Tower	Sheet:	C2
Date:	05/19/2012	Scale:	NTS

Legs	5.563 OD X .500	5.563 OD X .375	5.563 OD X .258	4.500 OD X .337	4.000 OD X .318	3.500 OD X .300	2.875 OD X .276	2.375 OD X .154
Diagonals	L 3 1/2 X 3 1/2 X 1/4	L 2 1/2 X 2 1/2 X 3/16	L 2 1/2 X 2 1/2 X 3/16	L 2 X 2 X 3/16	L 2 X 2 X 3/16	L 2 X 2 X 1/8	L 2 X 2 X 1/8	L 2 X 2 X 1/8
Horizontals	NONE							
Brace Bolts	(1) 3/4"	(1) 5/8"						
Top Face Width	17'	13'	11'	9'	7'	5'		
Panel Count/Height	4 @ 10'	9 @ 6.6667'						
Section Weight	3277	2683	2316	1829	1642	1111	843	576
								454



Designed Appurtenance Loading

Elev	Description	Tx-Line
197.4	(1) DB810E-PS Whip Antenna	
192	Leg Dish Mount	
192	(1) 6' Solid Dish w/ Radome	(1) E60
190	6ft Sidearm	
190		(1) 7/8"
185.75	(1) 103-36A-5-EA	
180	6ft Sidearm	
180		(1) 7/8"
177	(1) BPS10-H-B1 Whip Antenna	
177	(1) BPS10-H-B1 Whip Antenna	
170	6ft Sidearm	
170	6ft Sidearm	
170		(1) 1 5/8"
170		(1) 1 5/8"
120	3T-Boom(R) - 10ft Face - 3ft Standoff	
120	(9) 8' x 1' x 3in Panel Antennas	(9) 1 5/8"
55	(2) Leg Dish Mount	
55	(2) 6' Solid Dishes w/ Radome	(2) E60

Base Reactions

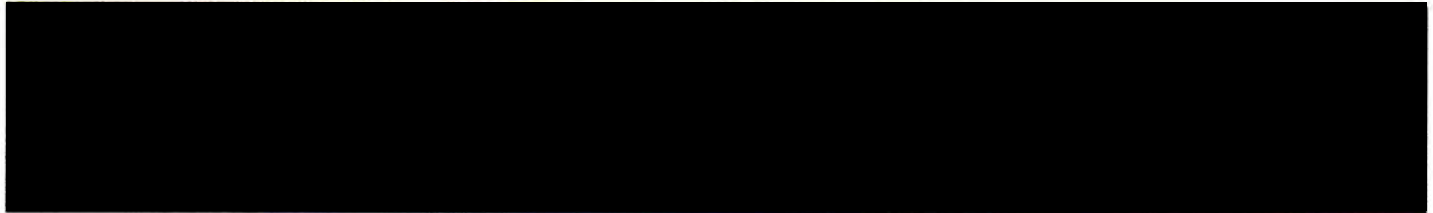
Total Foundation		Individual Footing	
Shear (kips)	35.96	Shear (kips)	21.63
Axial (kips)	84.76	Compression (kips)	225
Moment (ft-kips)	3553	Uplift (kips)	193
Torsion (ft-kips)	-25.95		

Material List

Display	Value
A	L 2 X 2 X 1/8

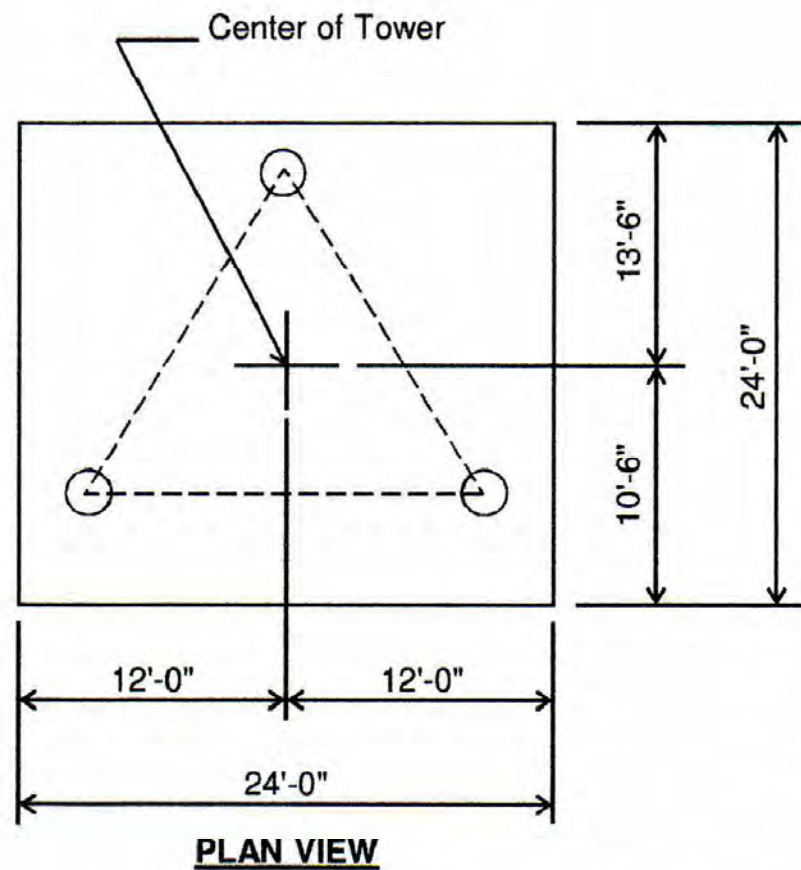
Notes

- 1) All legs are 50 ksi.
- 2) All braces are 36 ksi.
- 3) All brace bolts are A325-X.
- 4) The tower model is S3TL Series HD1.
- 5) Azimuths are relative (not based on true north).
- 6) Foundation loads shown are maximums.
- 7) (6) 1" dia. F1554 grade 105 anchor bolts per leg. Minimum 35.5" embedment from top of concrete to top of nut.
- 8) All unequal angles are oriented with the short leg vertical.
- 9) Weights shown are estimates. Final weights may vary.
- 10) This tower was designed for a basic wind speed of 90 mph with 0" of radial ice, and 30 mph with 3/4" of radial ice, in accordance with ANSI/TIA-222-G, Structure Class III, Exposure Category C, Topographic Category 1.
- 11) The foundation loads shown are factored loads.



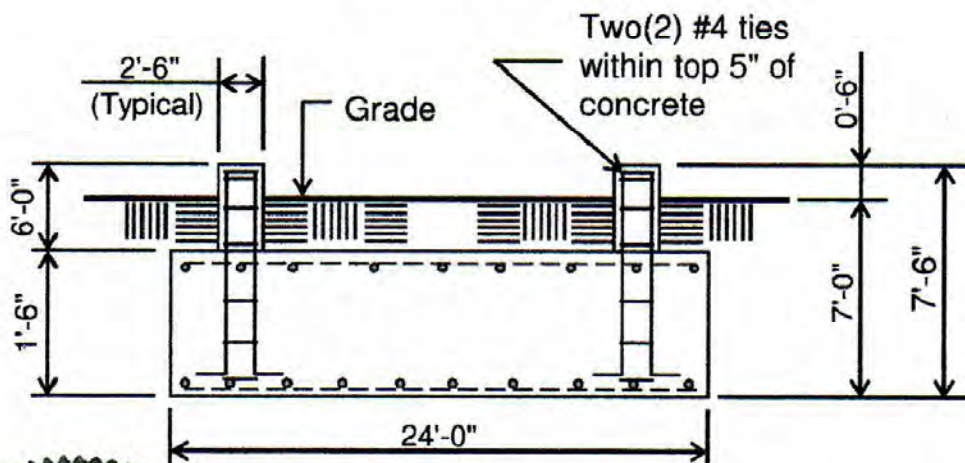
Project: Pilesylvania County Date: 05/19/2012 Scale: NTS	<p>Pilesylvania County Engineer/Management 53 North Main Street Chambersburg, VA 22621 Phone: 434-322-7710</p>	No. _____ Revision/Issue _____ Date _____	Seal _____	Title: _____ Sheet # 4 of 10
--	--	---	------------	---------------------------------

C3



Notes:

- 1). Concrete shall have a minimum 28-day compressive strength of 4000 PSI, in accordance with ACI 318-05.
- 2). Rebar to conform to ASTM specification A615 Grade 60.
- 3). All rebar to have a minimum of 3" concrete cover.
- 4). All exposed concrete corners to be chamfered 3/4".
- 5). The foundation design is based on the geotechnical report by ECS, project no. 12:6511, dated May 24, 2012.



- 6). See the geotechnical report for compaction requirements, if specified.
- 7). The foundation is based on the following factored loads:
 Factored download (kips) = 25.78
 Factored overturn (kip-ft) = 3553.24
 Factored shear (kips) = 35.96
- 8). This is a design drawing only. Please see final construction drawings for all installation details.

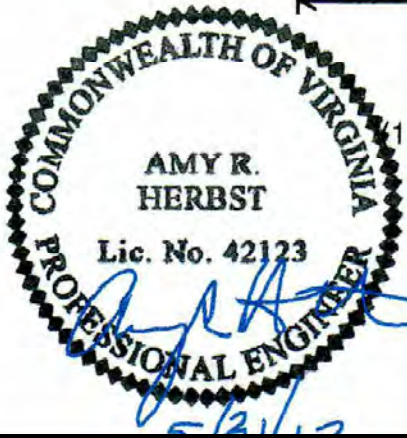
ELEVATION VIEW


(35.27 Cu. Yds.)
 1 REQD.; NOT TO SCALE)

CAUTION: Center of tower is not in center of slab.

Rebar Schedule per Mat and per Pier

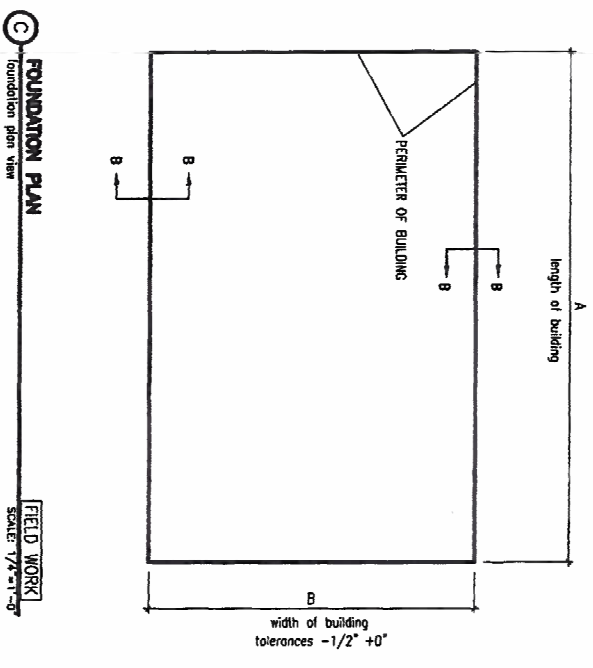
Pier	(10) #7 vertical rebar w/hooks at bottom w/#4 Rebar ties, two (2) within top 5" of pier then 12" C/C
Mat	(26) #6 horizontal rebar evenly spaced each way top and bottom. (104 total)



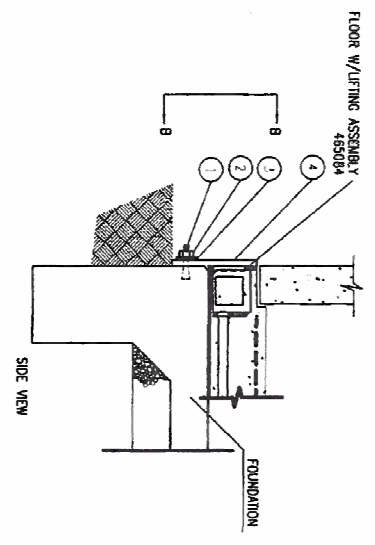
 Pilesylvania County Emergency Management 531 Main Street Chambers, VA 24531 Phone: 434-432-7710	C4	Project: Pilesylvania County Gift Road Tower Date: 05/19/2012 Scale: NTS	Title: Stamped Tower Foundation Sheet # 5 of 10	Seal	<table border="1" style="width: 100%; border-collapse: collapse;"> <tr> <th>No.</th> <th>Revision/Issue</th> <th>Date</th> </tr> <tr> <td> </td> <td> </td> <td> </td> </tr> </table>	No.	Revision/Issue	Date			
No.	Revision/Issue	Date									

NOTES:

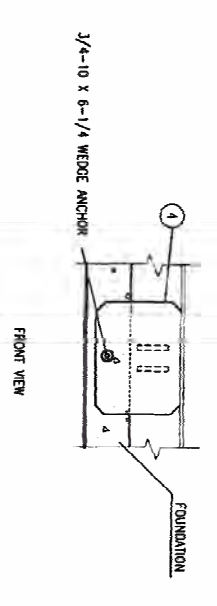
1. GENERAL
 - 1.1 All dimensions are specified in inches unless otherwise noted.
 - 1.2 Design and installation of foundation by local engineer or architect. This is only a suggested foundation plan.
 - 1.3 Foundation is designed for 2000 psf bearing. However, it is the responsibility of the contractor to verify the adequacy of the foundation from soil boring data.
 - 1.4 Slab type foundation is not recommended for areas with extreme frost conditions or where high water tables are present. These conditions may result in differential settlements in the foundation resulting in structural cracks.
 - 1.5 Perimeter footing must be a minimum foundation depth of 24" or per local frost line on undisturbed soil.
 - 1.6 Local wedge anchors after sheller is located on slab to correctly align with finished outer plate. Do not install wedge anchor before setting sheller on foundation.
2. MATERIAL
 - 2.1 Concrete shall have a minimum compressive strength of 3000 psi. 28 days and shall be installed in accordance with the ACI-318 Building Code requirements for Reinforced Concrete.
 - 2.2 Reinforcing bars shall conform to ASTM A65 grade 60 specifications and be specified in accordance with ACI-318.
 - 2.3 Test cylinders shall be molded and laboratory cured in accordance with ASTM C31. Three cylinders shall be taken for each day's concrete placement. Cylinders shall be tested in accordance with ASTM C39.
3. TOLERANCES
 - 3.1 Tops of concrete foundation must be within 0.02' per foot of elevation specified by the contractor.



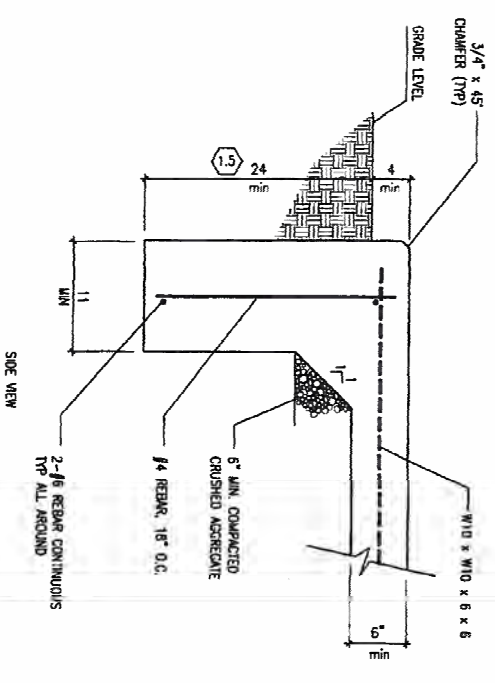
272011-096 36
 WIDTH IN INCHES
 LENGTH IN FEET



A BUILDING ATTACHMENT FIELD WORK section view SCALE: 1/2"=1'-0"



B THE DOWN PLATE FIELD WORK front view SCALE: 3/4"=1'-0"

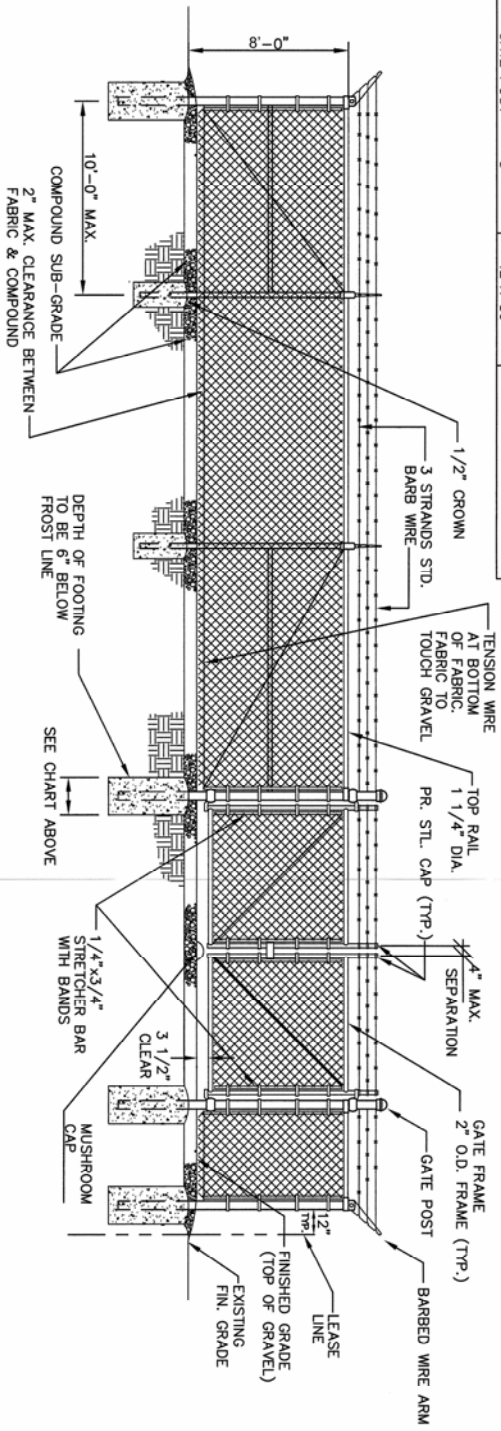


D CONTINUOUS PERIMETER FOOTING FIELD WORK section view SCALE: 3/4"=1'-0"

NO.	REV.	DATE	DESCRIPTION
1	1	05/19/2012	ISSUED FOR PERMITS
2	1		WEDGE ANCHOR 3/4-10 x 6 1/4
3	1		HEX NUT 3/4-10
4	1		FLAT WASHER 3/4
4	1		PLATE 9 x 12 x 1/2
4	1		265053-1
4	1		165005-009
4	1		165002-002
4	1		3A464
4	1		WEDGE ANCHOR 3/4-10 x 6 1/4
4	1		HEX NUT 3/4-10
4	1		FLAT WASHER 3/4
4	1		PLATE 9 x 12 x 1/2
4	1		265053-1
4	1		165005-009
4	1		165002-002
4	1		3A464
4	1		WEDGE ANCHOR 3/4-10 x 6 1/4
4	1		HEX NUT 3/4-10
4	1		FLAT WASHER 3/4
4	1		PLATE 9 x 12 x 1/2
4	1		265053-1
4	1		165005-009
4	1		165002-002
4	1		3A464
4	1		WEDGE ANCHOR 3/4-10 x 6 1/4
4	1		HEX NUT 3/4-10
4	1		FLAT WASHER 3/4
4	1		PLATE 9 x 12 x 1/2
4	1		265053-1
4	1		165005-009
4	1		165002-002
4	1		3A464
4	1		WEDGE ANCHOR 3/4-10 x 6 1/4
4	1		HEX NUT 3/4-10
4	1		FLAT WASHER 3/4
4	1		PLATE 9 x 12 x 1/2
4	1		265053-1
4	1		165005-009
4	1		165002-002
4	1		3A464
4	1		WEDGE ANCHOR 3/4-10 x 6 1/4
4	1		HEX NUT 3/4-10
4	1		FLAT WASHER 3/4
4	1		PLATE 9 x 12 x 1/2
4	1		265053-1
4	1		165005-009
4	1		165002-002
4	1		3A464
4	1		WEDGE ANCHOR 3/4-10 x 6 1/4
4	1		HEX NUT 3/4-10
4	1		FLAT WASHER 3/4
4	1		PLATE 9 x 12 x 1/2
4	1		265053-1
4	1		165005-009
4	1		165002-002
4	1		3A464
4	1		WEDGE ANCHOR 3/4-10 x 6 1/4
4	1		HEX NUT 3/4-10
4	1		FLAT WASHER 3/4
4	1		PLATE 9 x 12 x 1/2
4	1		265053-1
4	1		165005-009
4	1		165002-002
4	1		3A464
4	1		WEDGE ANCHOR 3/4-10 x 6 1/4
4	1		HEX NUT 3/4-10
4	1		FLAT WASHER 3/4
4	1		PLATE 9 x 12 x 1/2
4	1		265053-1
4	1		165005-009
4	1		165002-002
4	1		3A464
4	1		WEDGE ANCHOR 3/4-10 x 6 1/4
4	1		HEX NUT 3/4-10
4	1		FLAT WASHER 3/4
4	1		PLATE 9 x 12 x 1/2
4	1		265053-1
4	1		165005-009
4	1		165002-002
4	1		3A464
4	1		WEDGE ANCHOR 3/4-10 x 6 1/4
4	1		HEX NUT 3/4-10
4	1		FLAT WASHER 3/4
4	1		PLATE 9 x 12 x 1/2
4	1		265053-1
4	1		165005-009
4	1		165002-002
4	1		3A464
4	1		WEDGE ANCHOR 3/4-10 x 6 1/4
4	1		HEX NUT 3/4-10
4	1		FLAT WASHER 3/4
4	1		PLATE 9 x 12 x 1/2
4	1		265053-1
4	1		165005-009
4	1		165002-002
4	1		3A464
4	1		WEDGE ANCHOR 3/4-10 x 6 1/4
4	1		HEX NUT 3/4-10
4	1		FLAT WASHER 3/4
4	1		PLATE 9 x 12 x 1/2
4	1		265053-1
4	1		165005-009
4	1		165002-002
4	1		3A464
4	1		WEDGE ANCHOR 3/4-10 x 6 1/4
4	1		HEX NUT 3/4-10
4	1		FLAT WASHER 3/4
4	1		PLATE 9 x 12 x 1/2
4	1		265053-1
4	1		165005-009
4	1		165002-002
4	1		3A464
4	1		WEDGE ANCHOR 3/4-10 x 6 1/4
4	1		HEX NUT 3/4-10
4	1		FLAT WASHER 3/4
4	1		PLATE 9 x 12 x 1/2
4	1		265053-1
4	1		165005-009
4	1		165002-002
4	1		3A464
4	1		WEDGE ANCHOR 3/4-10 x 6 1/4
4	1		HEX NUT 3/4-10
4	1		FLAT WASHER 3/4
4	1		PLATE 9 x 12 x 1/2
4	1		265053-1
4	1		165005-009
4	1		165002-002
4	1		3A464
4	1		WEDGE ANCHOR 3/4-10 x 6 1/4
4	1		HEX NUT 3/4-10
4	1		FLAT WASHER 3/4
4	1		PLATE 9 x 12 x 1/2
4	1		265053-1
4	1		165005-009
4	1		165002-002
4	1		3A464
4	1		WEDGE ANCHOR 3/4-10 x 6 1/4
4	1		HEX NUT 3/4-10
4	1		FLAT WASHER 3/4
4	1		PLATE 9 x 12 x 1/2
4	1		265053-1
4	1		165005-009
4	1		165002-002
4	1		3A464
4	1		WEDGE ANCHOR 3/4-10 x 6 1/4
4	1		HEX NUT 3/4-10
4	1		FLAT WASHER 3/4
4	1		PLATE 9 x 12 x 1/2
4	1		265053-1
4	1		165005-009
4	1		165002-002
4	1		3A464
4	1		WEDGE ANCHOR 3/4-10 x 6 1/4
4	1		HEX NUT 3/4-10
4	1		FLAT WASHER 3/4
4	1		PLATE 9 x 12 x 1/2
4	1		265053-1
4	1		165005-009
4	1		165002-002
4	1		3A464
4	1		WEDGE ANCHOR 3/4-10 x 6 1/4
4	1		HEX NUT 3/4-10
4	1		FLAT WASHER 3/4
4	1		PLATE 9 x 12 x 1/2
4	1		265053-1
4	1		165005-009
4	1		165002-002
4	1		3A464
4	1		WEDGE ANCHOR 3/4-10 x 6 1/4
4	1		HEX NUT 3/4-10
4	1		FLAT WASHER 3/4
4	1		PLATE 9 x 12 x 1/2
4	1		265053-1
4	1		165005-009
4	1		165002-002
4	1		3A464
4	1		WEDGE ANCHOR 3/4-10 x 6 1/4
4	1		HEX NUT 3/4-10
4	1		FLAT WASHER 3/4
4	1		PLATE 9 x 12 x 1/2
4	1		265053-1
4	1		165005-009
4	1		165002-002
4	1		3A464
4	1		WEDGE ANCHOR 3/4-10 x 6 1/4
4	1		HEX NUT 3/4-10
4	1		FLAT WASHER 3/4
4	1		PLATE 9 x 12 x 1/2
4	1		265053-1
4	1		165005-009
4	1		165002-002
4	1		3A464
4	1		WEDGE ANCHOR 3/4-10 x 6 1/4
4	1		HEX NUT 3/4-10
4	1		FLAT WASHER 3/4
4	1		PLATE 9 x 12 x 1/2
4	1		265053-1
4	1		165005-009
4	1		165002-002
4	1		3A464
4	1		WEDGE ANCHOR 3/4-10 x 6 1/4
4	1		HEX NUT 3/4-10
4	1		FLAT WASHER 3/4
4	1		PLATE 9 x 12 x 1/2
4	1		265053-1
4	1		165005-009
4	1		165002-002
4	1		3A464
4	1		WEDGE ANCHOR 3/4-10 x 6 1/4
4	1		HEX NUT 3/4-10
4	1		FLAT WASHER 3/4
4	1		PLATE 9 x 12 x 1/2
4	1		265053-1
4	1		165005-009
4	1		165002-002
4	1		3A464
4	1		WEDGE ANCHOR 3/4-10 x 6 1/4
4	1		HEX NUT 3/4-10
4	1		FLAT WASHER 3/4
4	1		PLATE 9 x 12 x 1/2
4	1		265053-1
4	1		165005-009
4	1		165002-002
4	1		3A464
4	1		WEDGE ANCHOR 3/4-10 x 6 1/4
4	1		HEX NUT 3/4-10
4	1		FLAT WASHER 3/4
4	1		PLATE 9 x 12 x 1/2
4	1		265053-1
4	1		165005-009
4	1		165002-002
4	1		3A464
4	1		WEDGE ANCHOR 3/4-10 x 6 1/4
4	1		HEX NUT 3/4-10
4	1		FLAT WASHER 3/4
4	1		PLATE 9 x 12 x 1/2
4	1		265053-1
4	1		165005-009
4	1		165002-002
4	1		3A464
4	1		WEDGE ANCHOR 3/4-10 x 6 1/4
4	1		HEX NUT 3/4-10
4	1		FLAT WASHER 3/4
4	1		PLATE 9 x 12 x 1/2
4	1		265053-1
4	1		165005-009
4	1		165002-002
4	1		3A464
4	1		WEDGE ANCHOR 3/4-10 x 6 1/4
4	1		HEX NUT 3/4-10
4	1		FLAT WASHER 3/4
4	1		PLATE 9 x 12 x 1/2
4	1		265053-1
4	1		165005-009
4	1		165002-002
4	1		3A464
4	1		WEDGE ANCHOR 3/4-10 x 6 1/4
4	1		HEX NUT 3/4-10
4	1		FLAT WASHER 3/4
4	1		PLATE 9 x 12 x 1/2
4	1		265053-1
4	1		165

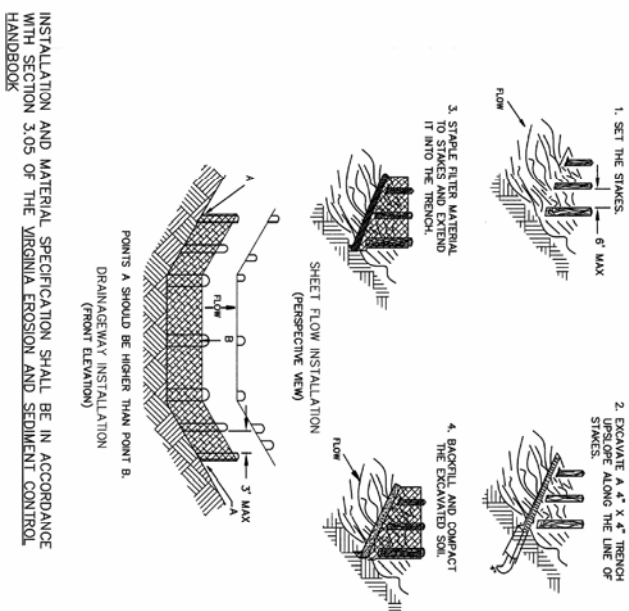
8' HIGH GATE / FENCE	FOOTINGS	NOTES:
LINE POST -2"	10" X 24"	1. ALL MATERIALS TO BE HOT DIP GALVANIZED, ESPECIALLY GATE FRAME
CORNER POST -3"	12" X 36"	
GATE POST -3"	12" X 36"	

NOTE:
GATE SHALL NOT BE FIELD / SHOP CUT & COLD GALVANIZED.



TYPICAL FENCE AND DOUBLE GATE DETAIL (WITH BARBED WIRED)

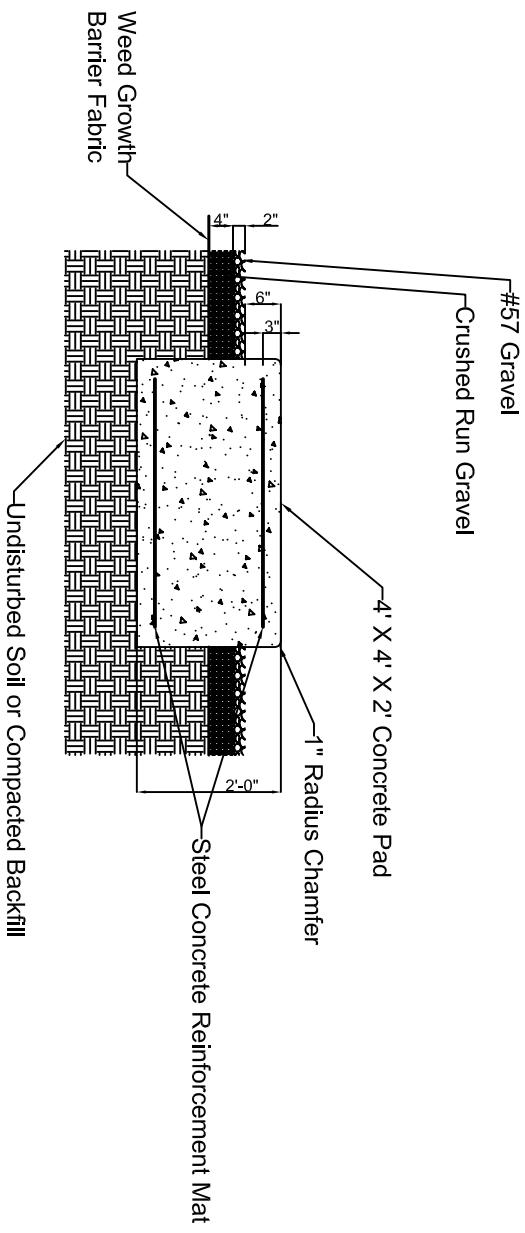
N.T.S.
REQUIRED AS INDICATED ON SITE PLAN



INSTALLATION AND MATERIAL SPECIFICATION SHALL BE IN ACCORDANCE WITH SECTION 3.05 OF THE VIRGINIA EROSION AND SEDIMENT CONTROL HANDBOOK

SILT FENCE

N.T.S.



Concrete Pad for Propane Tank (x2) and Lot Gravel Fill Details



Pittsylvania County
Emergency Management
53 North Main Street
PO Box 426
Chatham, VA 24531
Phone: 434-432-7710

Project: Pittsylvania County
Gift Road Tower

Date: 05/19/2012

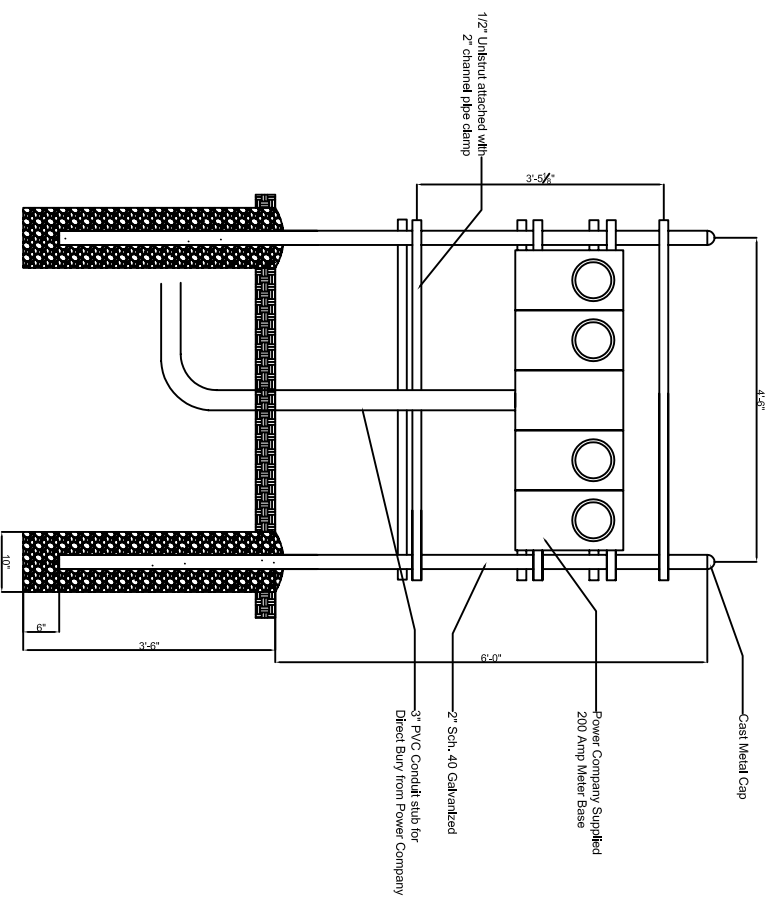
Scale: N.T.S.

Sheet: **C6**

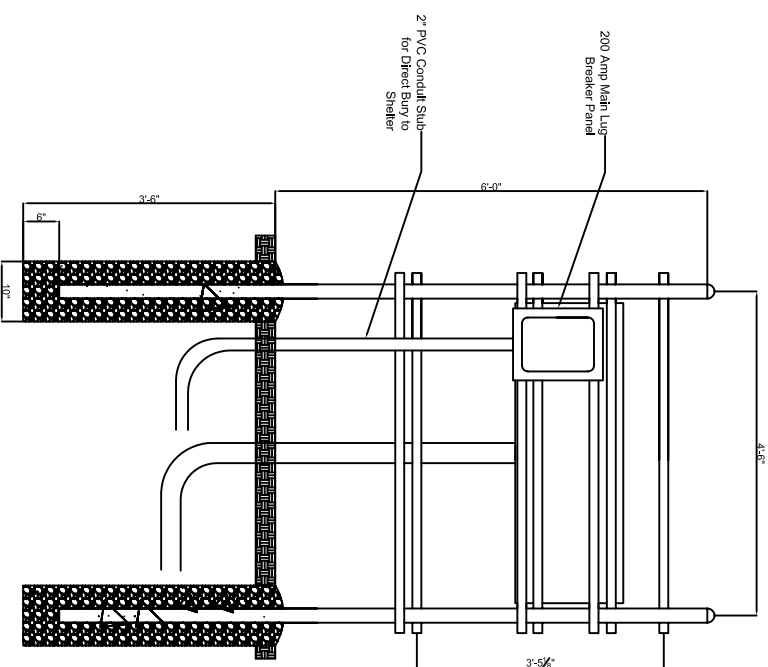
Title:
Misc. Construction
Sheet # 7 of 10

Seal

No.	Revision/Issue	Date



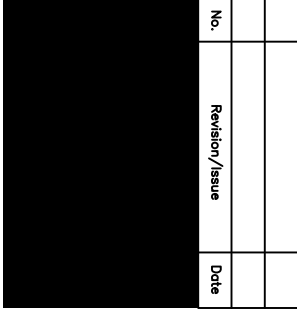
200 Amp X 4 Gang Meter Center with
Main Lug Breaker Panel (Meter Side)



200 Amp X 4 Gang Meter Center with
Main Lug Breaker Panel (Panel Side)

Seal

No.	Revision/Issue	Date
-----	----------------	------



Pittsylvania County
Emergency Management
53 North Main Street
Chatham, VA 24631
Phone: 434-432-7710

Project	Pittsylvania County 5th Road Tower	Sheet	E1
Date	05/19/2012		
Scale	NTS		

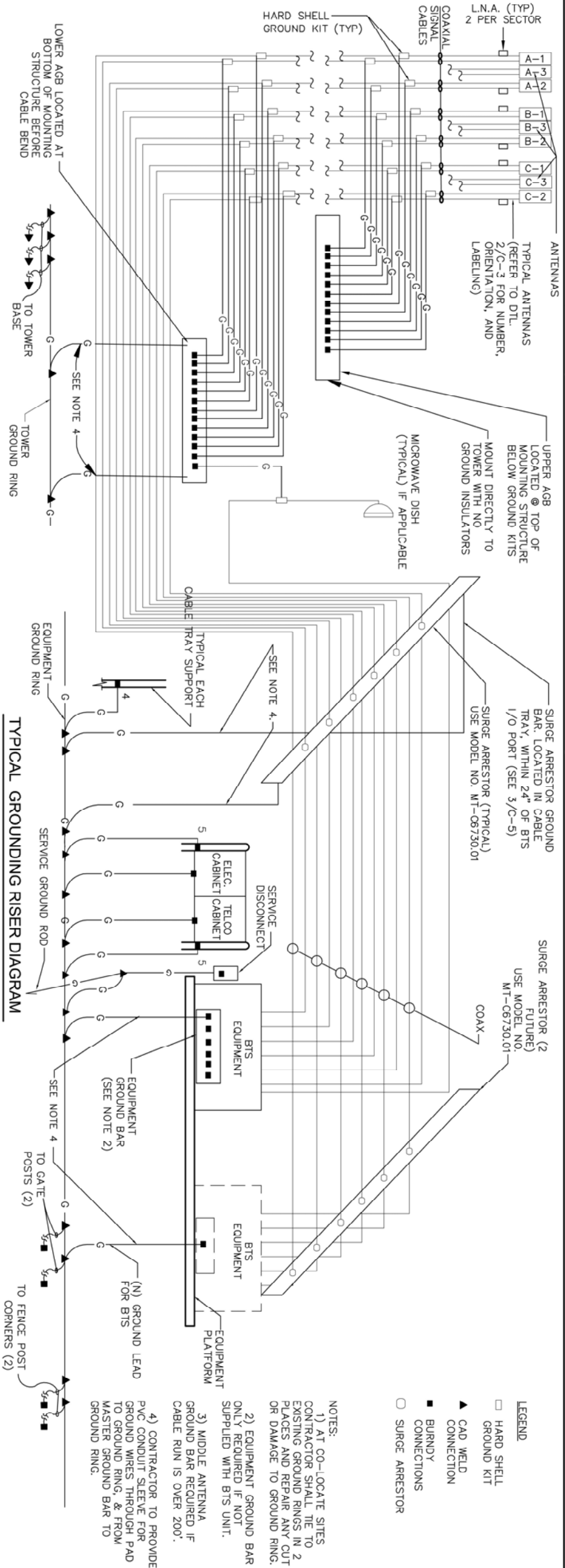
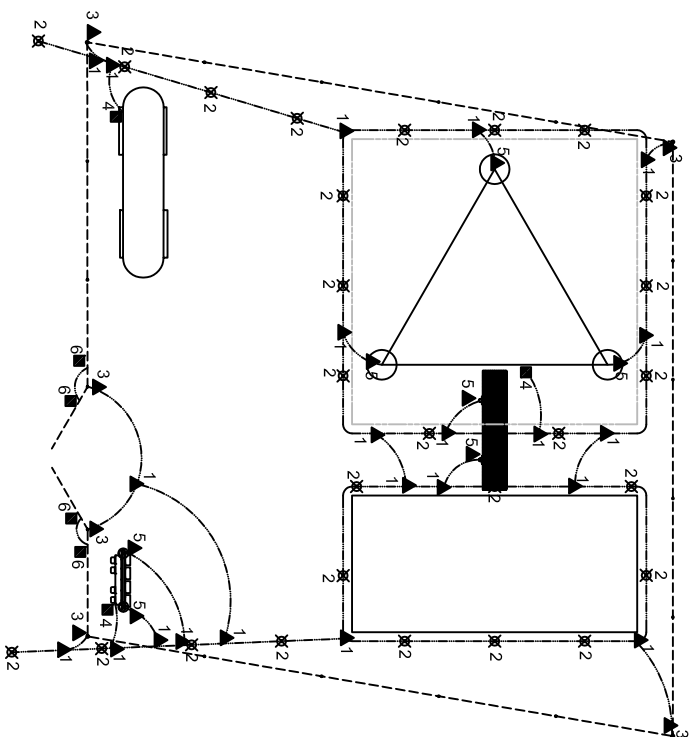
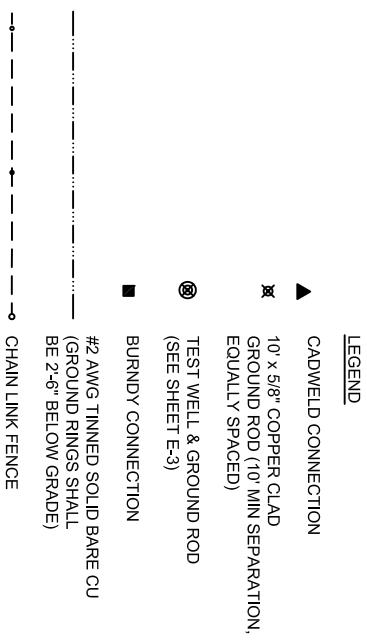
CAD WELD CONNECTIONS (DETAIL ON SHEET E3)

NO.	DESCRIPTION	MOLD NO.	WELD NO.
1	#2 SOLID TO #2 SOLID	PTC--1T1T	65
2	#2 SOLID TO GROUND ROD	GTC--161T	90

BURNDY CONNECTIONS (DETAIL ON SHEET E3)

NO.	DESCRIPTION	PART NO.
3	#2 SOLID TO FENCE POST	YA3CL--2TC38
4	#2 GREEN STRANDED 2-HOLE COMPRESSION LUG	YA3CL--2TC38
5	#2 SOLID TO POST	YA3CL--2TC38
6	BRAIDED STRAP BOLTED TO GATE POSTS	BD18G92

RESISTIVITY TESTING FOR SITE: 28,741 ohms-cm
ESTIMATED SITE GROUND SYSTEM RESISTANCE: 4.61ohms



- LEGEND
- HARD SHELL GROUND KIT
 - ▲ CAD WELD CONNECTION
 - BURNDY CONNECTIONS
 - SURGE ARRESTOR

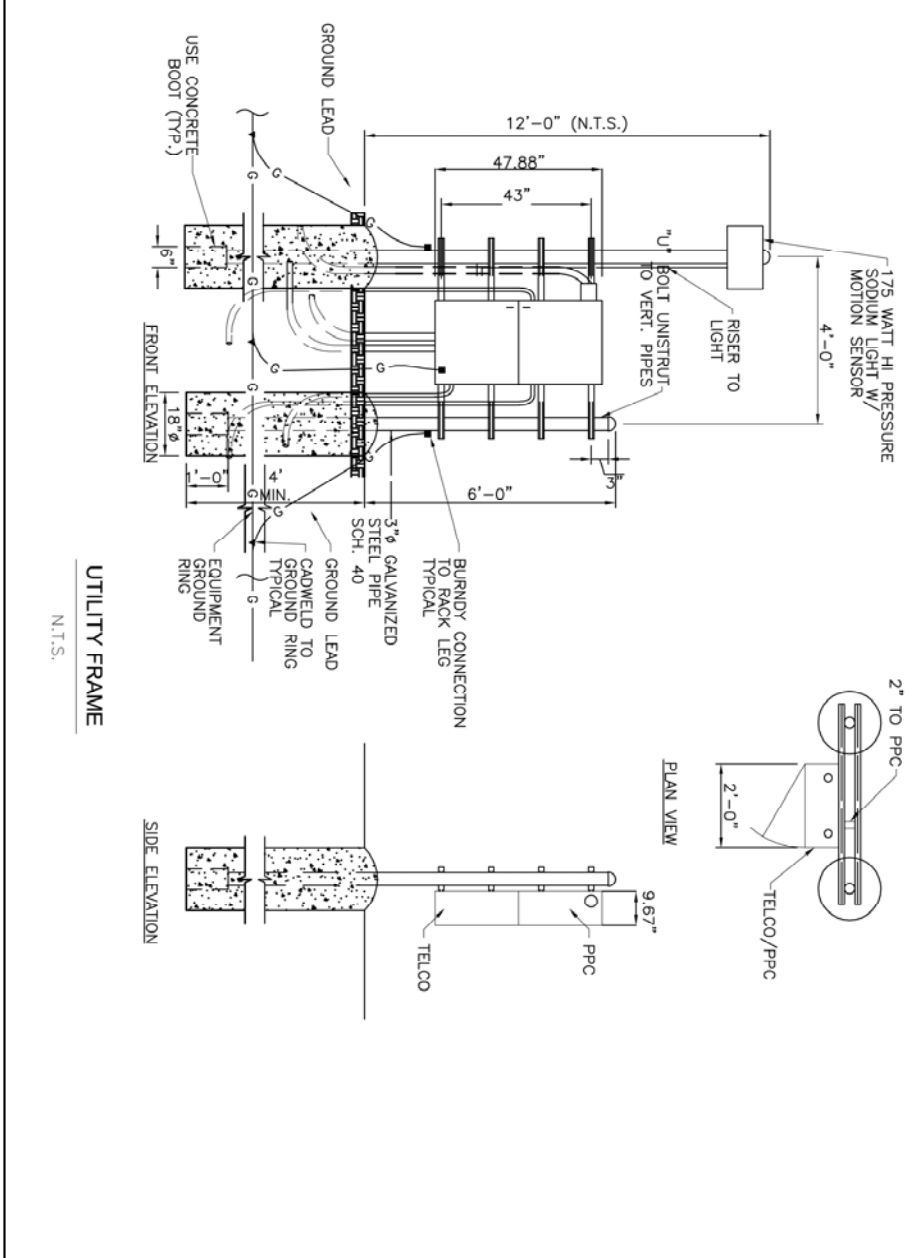
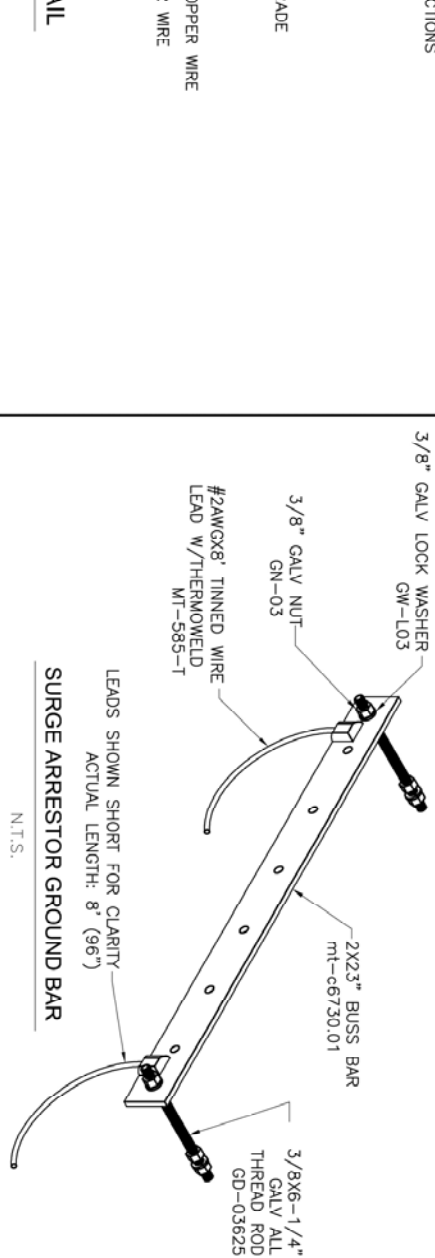
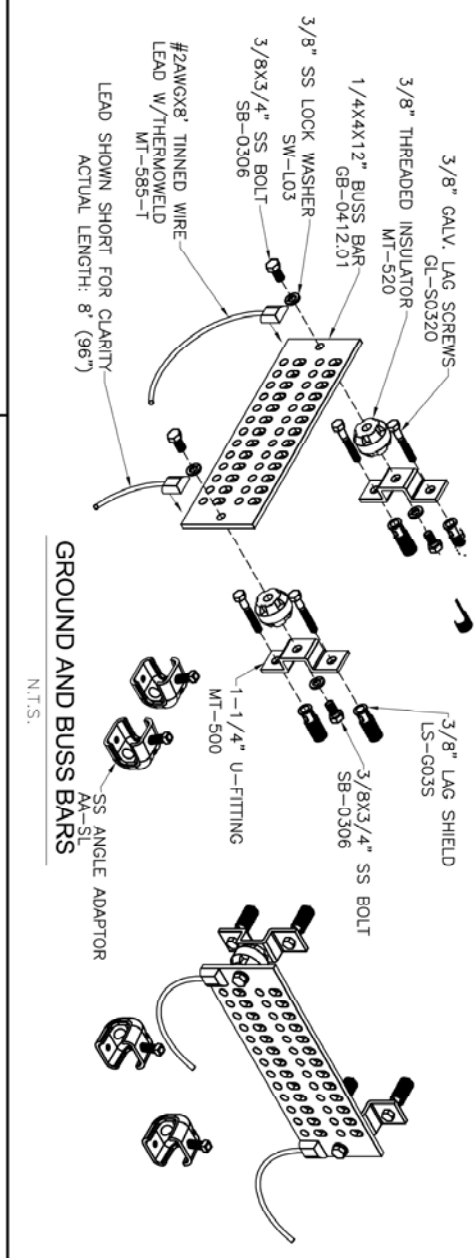
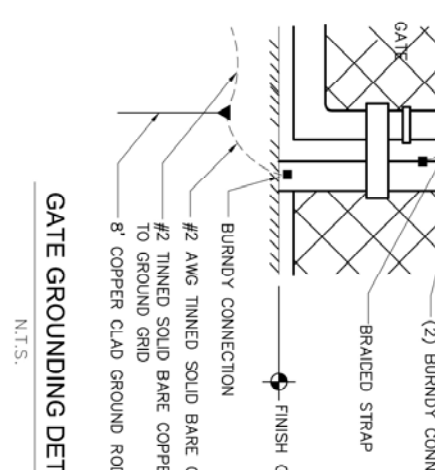
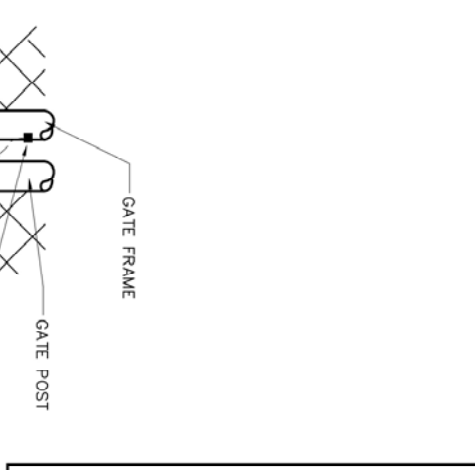
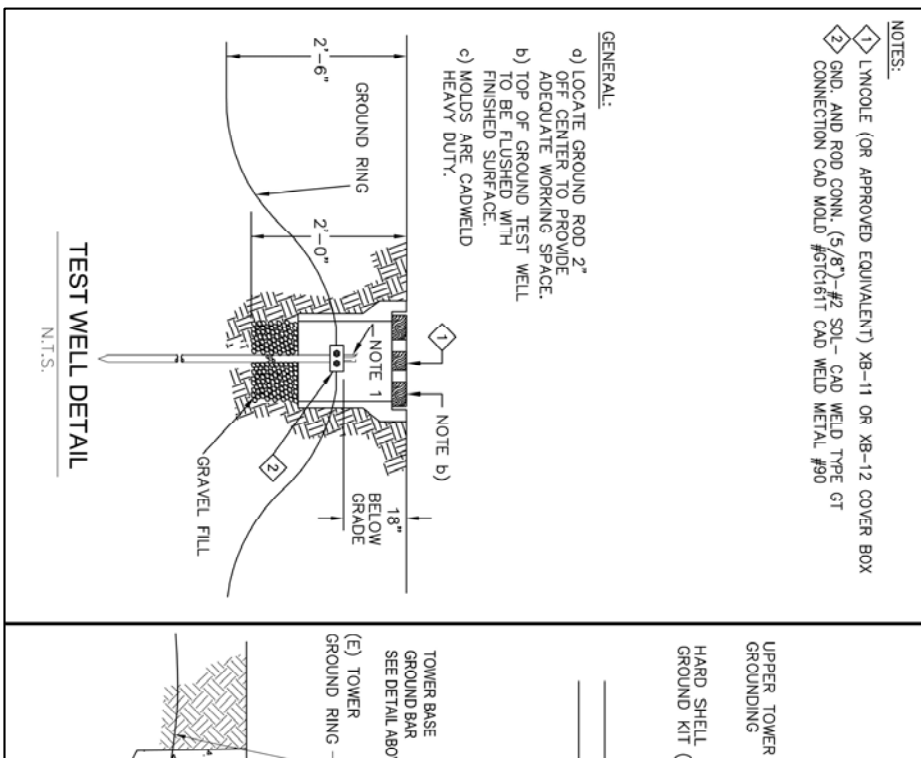
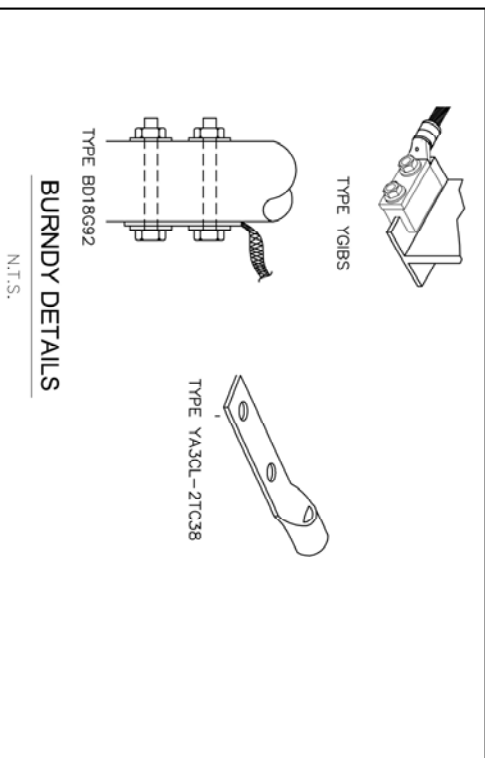
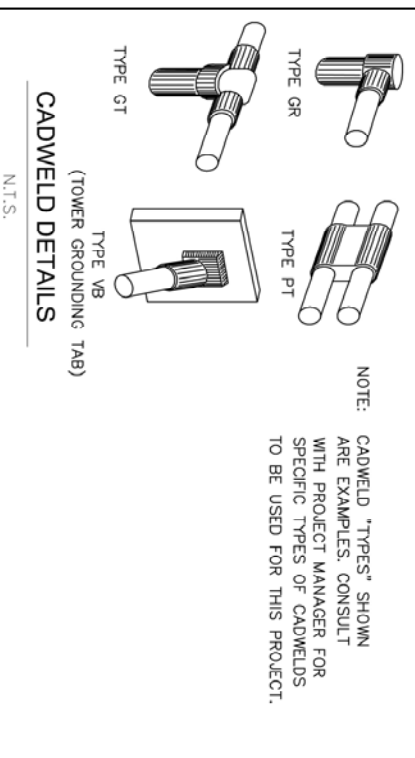
- NOTES:
- 1) AT CO-LOCATE SITES CONTRACTOR SHALL TIE TO EXISTING GROUND RINGS IN 2 PLACES AND REPAIR ANY CUT OR DAMAGE TO GROUND RING.
 - 2) EQUIPMENT GROUND BAR ONLY REQUIRED IF NOT SUPPLIED WITH BTS UNIT.
 - 3) MIDDLE ANTENNA GROUND BAR REQUIRED IF CABLE RUN IS OVER 200'.
 - 4) CONTRACTOR TO PROVIDE PVC CONDUIT SLEEVE FOR GROUND WIRES THROUGH PAD TO GROUND RING, & FROM MASTER GROUND BAR TO GROUND RING.

Seal

No.	Revision/Issue	Date



Project	Pilesyvarika County Girl Road Tower	Sheet	E2
Date	05/19/2012	Scale	NTS



Title:
Grounding Details
Sheet # 10 of 10

Seal

No.	Revision/Issue	Date



Project: Pittsylvania County
Gilt Road Tower
Date: 05/19/2012
Scale: N.T.S.
Sheet: **E3**